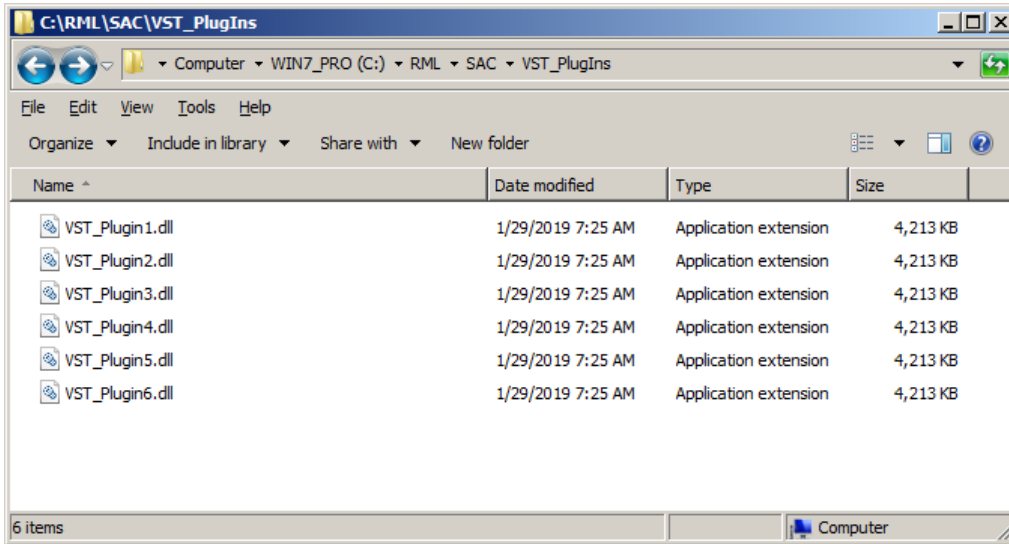


## VST Plugins Installation and Usage

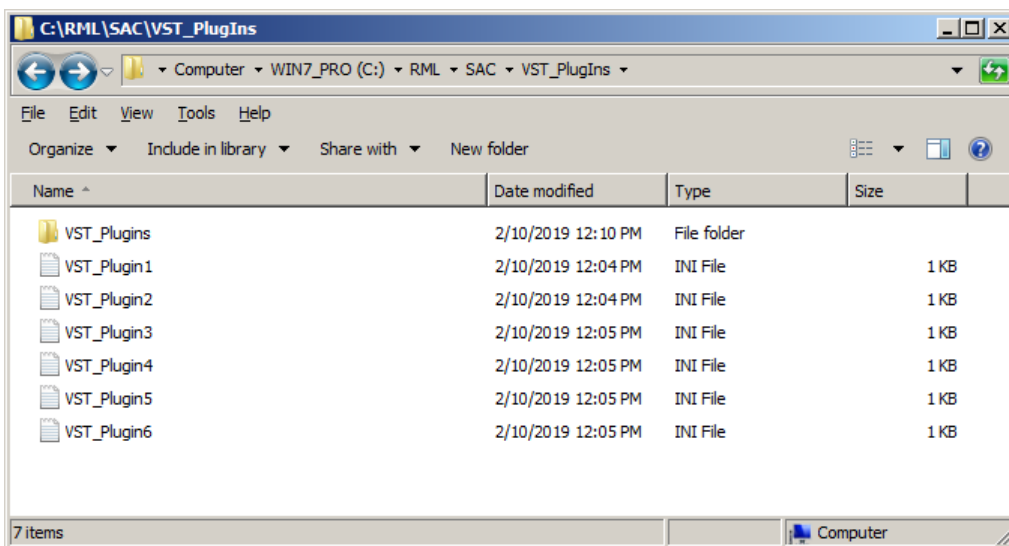
I am curious to know how many SAC users – or SAW users for that matter, store the VST plugins in the "root" of the VST\_PlugIns folder? For example:



In the above image, there are six plugins stored in the root of the VST\_PlugIns folder. What is interesting to note here is that when SAC is then launched, the following dialog appears – but just for a brief moment:



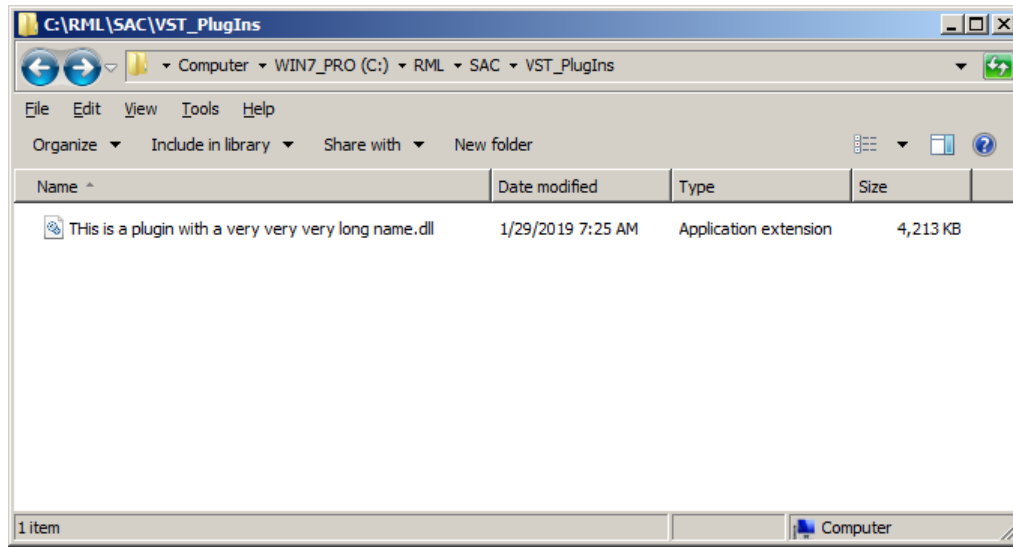
Now, have a look at the following:



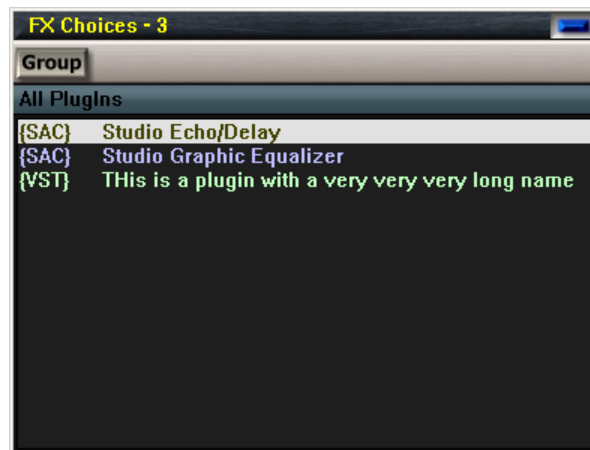
In the above image, I have created a folder called "VST\_PlugIns", moved all of the plugins into that folder, and then created six .ini files – each which point to one of those six plugins.

Now, when SAC is again launched ... guess what? No "Initializing VST PlugIns" dialog is displayed. Interesting! Also, I discovered that SAC launches much quicker!

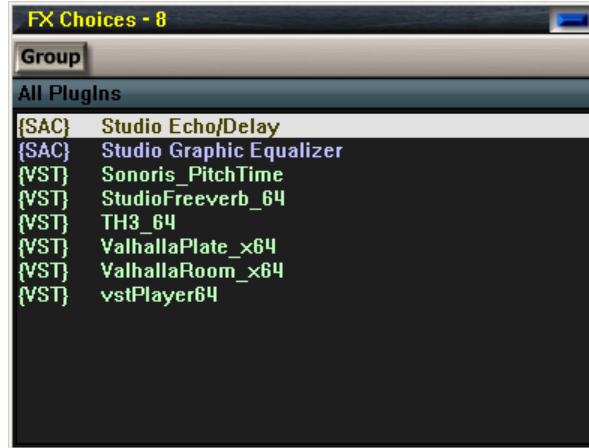
Therefore, we could *assume* that SAC peeks at the VST\_PlugIns folder to discover what .dlls are located in that folder. This must be the case as SAC does indeed launch much quicker. Now, have a look at the following:



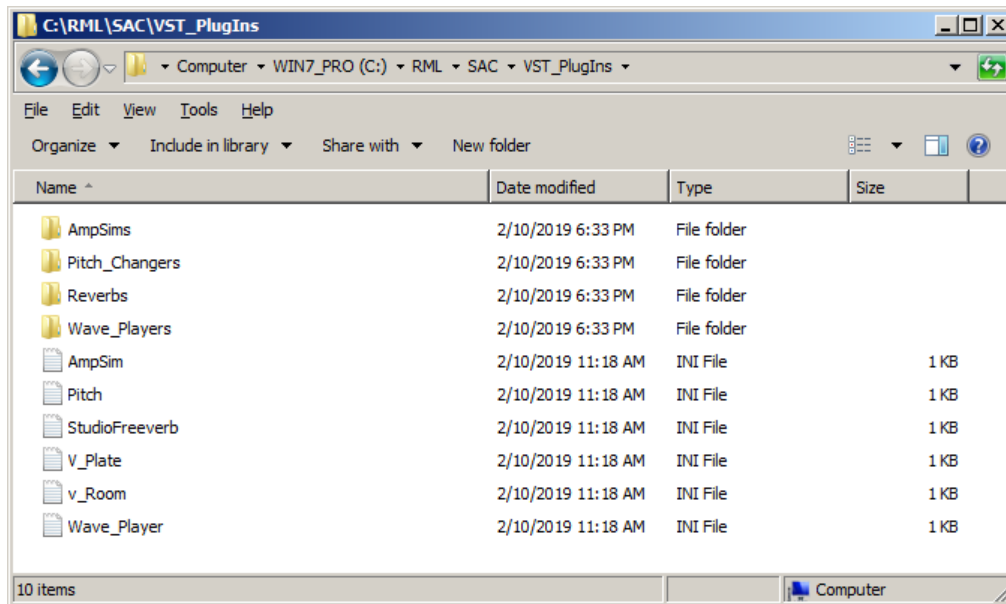
And this is what is displayed in SAC:



I am not too sure about you, but when I first started using SAC, I installed all of the plugins in the root of the VST\_PlugIns folder. This is a similar procedure to that of many – if not all other software applications that I have used. For example, observe the following:



When I understood more about Bob's .ini functionality in SAC, I began to see the *incredible versatility of this feature set*. For example:



I have created folders based on the type of plugin, moved all of the type plugins into their respective folders and then finally created the .ini files. Now have a look-see:



---

From my perspective – this is a much nicer way to both view and to use the available plugins!

Well done, Bob!

I hope that you find this information useful?

Sincerely

Dell Krauchi, aka: mr\_es335.