

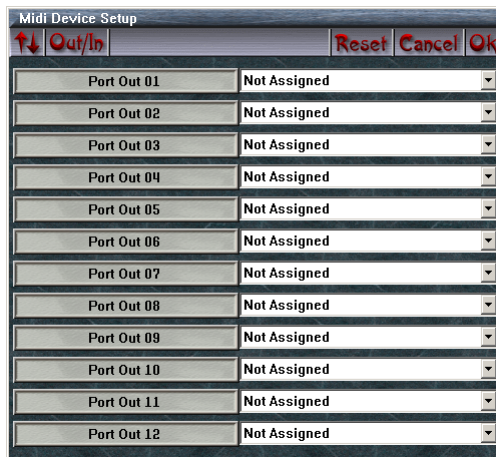
Using an External Keyboard with SAW/MWS

If at all possible Cary, use the demo versions that I have, so that you will be seeing what I am seeing.

1. Installed device drivers for my MIDI keyboard.
 - Observation: I am using my son's Yamaha PSR-e423 keyboard via USB.
2. Installed: ASIO4ALL.
 - Observation: This is my test system, and I use the ASIO4ALL drivers for such testing purposes. Just use your default audio device.
3. Installed: SAWStudio Demo 5.7.
4. Installed: MWS Demo 2.0.
5. Installed: RgcAudio z3ta+.
 - Path: C:\SAWStudioDemo\VST_Plugins
6. Launch: SAW.
7. Select: Options > Audio Driver Model > ASIO Protocol.
8. Select: 01: ASIO4ALL v2.
 - Observation: Use whatever audio device you have installed.
9. Select: File > Preferences> Save Default.
10. Select: F2
11. FX Choices, select: z3ta+.
12. FX Pre patches, select: Add.
 - Observation: The VSTi is now displayed.
13. For the VSTi, select VST Options Zone
14. Select: Set SoftSynth Mini-In Port

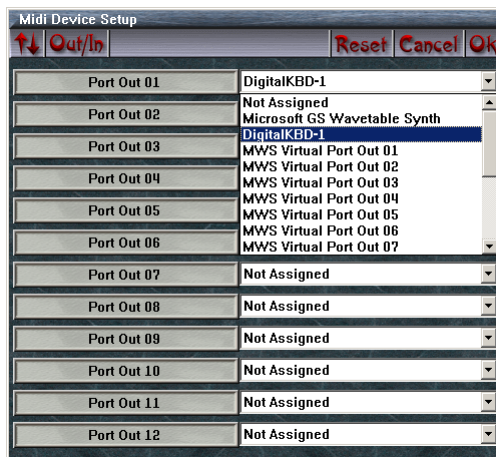


- Observation: Use whatever MIDI device you have installed.
15. Select: View > MidiShop
 - Observation: You may need to minimize the VSTi here.
 16. In Midi WorkShop, select: Options > Midi Device Setup
 - Observation: The Midi Device Setup Dialog is displayed:



17. For Port Out 01, select: [your Midi out device]

- Observation: What I have selected here is the Midi output port of the PSR-e423. This will now correspond with the MIDI output that was previously selected for the VSTi. You should be selecting the MIDI output port of your MIDI device.



18. Select: Ok

19. In SAW, select: F1

20. In the MultiTrack, enable: Live mode

- Observation: You may want to check your input or output levels first.

21. Now, play your keyboard, you should be hearing audio output now.

Closing Comments

I have tested and re-tested the above procedure three times...so it should work for you.

Sincerely,
Dell